

# BEAUTIFUL KITCHENS

APRIL 2011 £8.00  
US\$8.00/AUS\$10.75/NZ\$13.25

*The UK's best-selling kitchen magazine*

## DESIGNED FOR LIFE

*Create a light-filled extension*

**Natural winners**

TIMELESS STONE  
FOR FLOORS, WALLS  
& WORKTOPS

**SLEEK, SMART  
& SOPHISTICATED**  
*Designer hobs  
& hoods with  
wow factor*

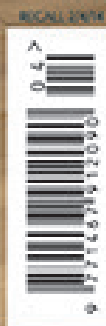
**Space makers**

BIG IDEAS FOR  
SMALL KITCHENS  
THE ULTIMATE PANTRY  
NEW FLEXIBLE  
REFRIGERATION

# Effortless beauty

REAL ROOMS WITH DREAM SCHEMES

**PLUS Save 15% on Designers Guild paint & accessories**



# UTILITY & simplicity

*Elizabeth and Paul Hersch chose the unadorned functionality of Shaker style to transform their windowless kitchen into a light-filled family space*

Feature **CAROLINE FOSTER**  
Photography **DAVID PARMITER**



## *Project profile*

**THE OWNERS** Elizabeth and Paul Hersch, both doctors, and their children, Emily, 7, Beatrice, 5, and Esme, 3

**THEIR HOME** A converted barn, built in the 1800s, located near Bath

**THE PROJECT** Removing two dividing walls to incorporate a separate dining room and extending to create a large open-plan space

**ROOM SIZE** 7.8 x 4.6m

**DESIGNER** James Horsfall at Bath Kitchen Company

**CABINETRY** Bespoke handmade furniture, £16,500, cabinetry only

**BUDGET** Around £30,000, excluding building works

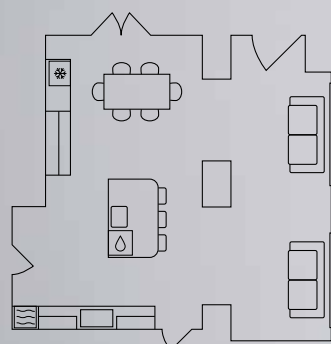
## *Perfect contrast*

Muted colours are warmed up by introducing a solid-oak dining table and chairs in fresh tones. Meanwhile, a large metal pendant shade adds a clean-lined industrial element



**In proportion**  
A 1.5-bowl sink doesn't overwhelm a small island, while grooves cut into the granite create an understated and stylish drainer

**The layout**



**'A KITCHEN ISN'T JUST ABOUT THE PRESENT – A GOOD DESIGN SHOULD HAVE AN EYE ON THE FUTURE'**

**The details**

**CABINETRY** Bespoke spray-painted maple-framed units from Bath Kitchen Company, £16,500, cabinetry only

**SURFACES** 30mm polished-granite worktops in Kashmir White, £350lin m, Bath Kitchen Company. Cathedral Tumbled limestone floor tiles, £62.40sq m, Boniti. **Wall paint**, Strong White modern emulsion, £39.50 for 2.5 litres, Farrow & Ball

**APPLIANCES** Single oven, £793; induction hob, £882; extractor, £444; combination

microwave, £828; dishwasher, £540, all Bosch

**SINK AND TAP** Undermounted sink in stainless steel, £332; tap in Silk steel, £286, both Franke

**FINISHING TOUCHES** Dining table, for similar try the Mendoza, £498, Furniture Shop UK. Reproduction Charles Eames DSW chairs, £49.95 each; Vivian bar stools with leather seat pad, £169 each, all Vita Interiors. Original BTC Giant pendant lamp, from £168, sourced through Lighting Matters



**Subtle addition**  
Including an overhang on the island worktop creates a perfect breakfast bar, with backless bar stools that can be pushed under to keep the space tidy

**DESIGN SOLUTION** *Designer James Horsfall explains...*

**What was the thinking behind the room?**  
Originally, the kitchen was small and narrow with no windows, so the dividing walls were removed to make it much larger. I then separated it into three zones. One section would contain the wet preparation area, another the dining table and a third area would be a casual sitting space.

**How did you decide on a scheme?**  
The Hersches wanted a functional but stylish kitchen, so I created straightforward units with a simple Shaker look and modern elements. This understated design won't date quickly.

**Why did you opt for a compact island?**  
To give the kitchen a roomy feel, a smaller island was included. Space is a luxury and having wide walkways is visually appealing and affords efficient footfall that doesn't disturb the cook. It's

important to divide a large room into sections to make sure the proportions work together.

**How was the relaxed look achieved?**  
There's always a temptation to fill a large room but, by not including too many tall or unnecessary pieces of furniture, it allows the space to breathe. I also built shelves where Elizabeth could display her cookery books. The open recesses makes the unit resemble a contemporary dresser.

**Were structural supports an issue?**  
Yes, but using light colours enhances the feeling of space, helping to disguise the pillars and beams so they don't dominate the room. There's a beam next to the extractor and I had to carefully line everything up to ensure all the units fitted and flowed, working around the supports so they didn't make the layout look unbalanced.

**What about maximising light?**  
We located the spotlights to specifically define the three sections of the room and, as the ceiling isn't very high, we opted for white lighting that didn't stand out too much. Including under-counter lights gave the Hersch family a mood-lighting option, while painting the walls in a shade of white is a guaranteed way to help keep the space looking as bright as possible.

**Why did you choose a grey finish for the cabinetry?**  
Grey is a timeless colour that works well with natural lights and there are warm tones that work beautifully when painted on furniture. I suggested using a mid-tone shade to incorporate visual depth to the kitchen area, and although Elizabeth was initially hesitant, she's glad that she took the risk – the soft grey really adds interest.



# *Beautiful* KITCHENS

Credits:

Article kindly supplied by Beautiful Kitchens

The rights to the layouts, images and copy contained therein are held by Beautiful Kitchens magazine exclusively.

Visit:

[Beautiful Kitchens Blog](#)

Visit:

[Beautiful Kitchens Website](#)